

# news

Mobile Origin  
Nanoleaf



## Mobile Origin 3 in 1 Wireless charger, black

PN **FRL-WCH-31-BLK**

RRP **38,99 €**

EAN **8594215991878**



### Mobile Origin wireless charger

- Convenient wireless charging with 3in1 Wireless Charger!
- Wireless magnetic MagSafe compatible charging
- Charges 3 devices simultaneously - iPhone, Apple Watch and AirPods
- Ideal for devices that supports magnetic charging
- Stand function
- Indicator light
- USB-C port
- 1m USB-C Cable
- Note: Use with Adapter QC3.0/PD with minimum power of 20W.

### Tech Specs:

- Material: TPU
- Output: Phone: 5W/7,5W/10W/15W
- Output Watch: 3W Max
- Output Earphones: 3W Max
- Product Size: 175x90x116
- Interface: Type-C

### Key Features:

- Effortless Charging for Your Devices: Stay charged without the hassle of multiple cables. The Mobile Origin 3-in-1 Wireless Charger is designed to power your iPhone, AirPods, and Apple Watch simultaneously, offering seamless convenience. Engineered with advanced magnetic alignment, it ensures a perfect connection every time for fast and reliable charging.
- 3 charging points for different devices: Power up three devices at once – your phone, watch, and earbuds. With fast and dependable wireless charging. Eliminate cable clutter and keep your daily essentials charged and organized in one stylish, compact hub.
- Minimalist Design: It transforms your workspace with its convenient stand function. Designed to keep your iPhone in an optimal viewing angle, the charger allows you to easily watch videos, follow notifications, or engage in video calls hands-free. Crafted with a sleek, modern design, this charger complements any environment, whether it's on your desk, nightstand.
- 15W Max Fast Charge: Equipped with 15W Phone Charging, Watch and Earphones 3W Charging technology. This versatile charger ensures your devices power up quickly and efficiently.
- Enhanced Ventilation: Designed with bottom ventilation to improve airflow, ensuring optimal cooling and preventing overheating during use.
- Intuitive Light Indicator: Letting you know the charging status of your devices at a glance.
- Power connected - Light turns on for 1 second
- Phone magnetic wireless charging - Blue Light
- Earphone charging - Green Light
- Foreign object detection - Blue light flashing
- Foreign object detection - Green light flashing

### Package includes:

- 3in1 Magnetic Wireless Charger
- USB-C to USB-C Charging Cable
- User Manual



## Mobile Origin 3 in 1 Wireless charger, white

PN **FRL-WCH-31-WHT**

RRP **38,99 €**

EAN **8594215991885**

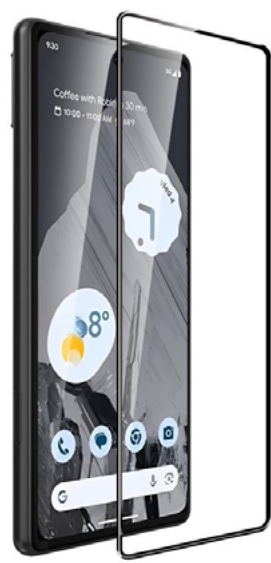


## Mobile Origin EasyGlass

Asus



Google



Honor



iPhone



Motorola



OnePlus



Realme



Samsung



Xiaomi



### Mobile Origin Easy Glass

- Double Strong & Hydrophobic Electroplated Oleophobic Layer Glass

### Tech Specs:

- Ultra thin glass (0.33mm)
- 9H Hardness
- Precision 2.5D Edge Finish
- Full Coverage
- Water Repellent
- Anti-Fingerprint
- Scratch Resistant
- Robust Durability
- Excellent Flexibility
- Easy Installation
- Material: Aluminosilicate glass
- Thickness: 0.33mm
- Glue: 120µm to 380µm
- Glass Type: Aluminosilicate(CSG)

### Key Features:

- **Unparalleled Durability:** Crafted from premium Aluminosilicate glass, this screen protector offers superior hardness and impact resistance, ensuring your iPhone stays protected from everyday scratches, drops, and bumps.
- **Anti-fingerprint and smudge proof:** Stay fingerprint-free with advanced hydrophobic electroplated oleophobic coating technology that resists smudges, oil, and water. This coating also enhances friction resistance, allowing your screen to remain pristine.
- **Full Coverage:** The glass fits perfectly over the screen, offering a sleek and invisible shield. Covers the most vulnerable areas, including the edges, protecting your phone from drops and impacts.
- Ideal for those seeking complete protection, especially for users who prefer minimal or slim cases or use their phone without a case.
- **Enhanced 2.5D Edge Finish:** Featuring a 2.5D edge finish, the EasyGlass screen protector provides a seamless and rounded edges, for smooth touch experience while maintaining the sleek look of your phone. Perfectly curved edges ensure comfort during use.
- **Multi-Layer Protection:** The seven-layer protective glass offers advanced durability with fingerprint and oil resistance, minor scratch repair, high-strength aluminum glass for impact resistance, enhanced mechanical strength, and a crystal-clear protective layer, all securely bonded with an adhesive layer.
- **Easy Installation:** Our screen protectors are designed for effortless application, making installation quick and stress-free. Each protector includes a cleaning kit with everything you need to prepare your screen – dust removal stickers, alcohol wipes, and microfiber cloths – to ensure a pristine surface before application. The special AB glue technology ensures perfect adhesion without bubbles, automatically filling any micro-gaps for a smooth and precise fit.

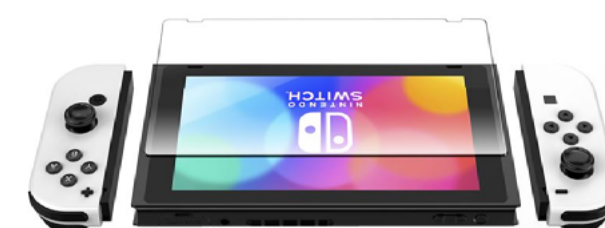
### Package contents:

- Glass
- Cleaning Kit

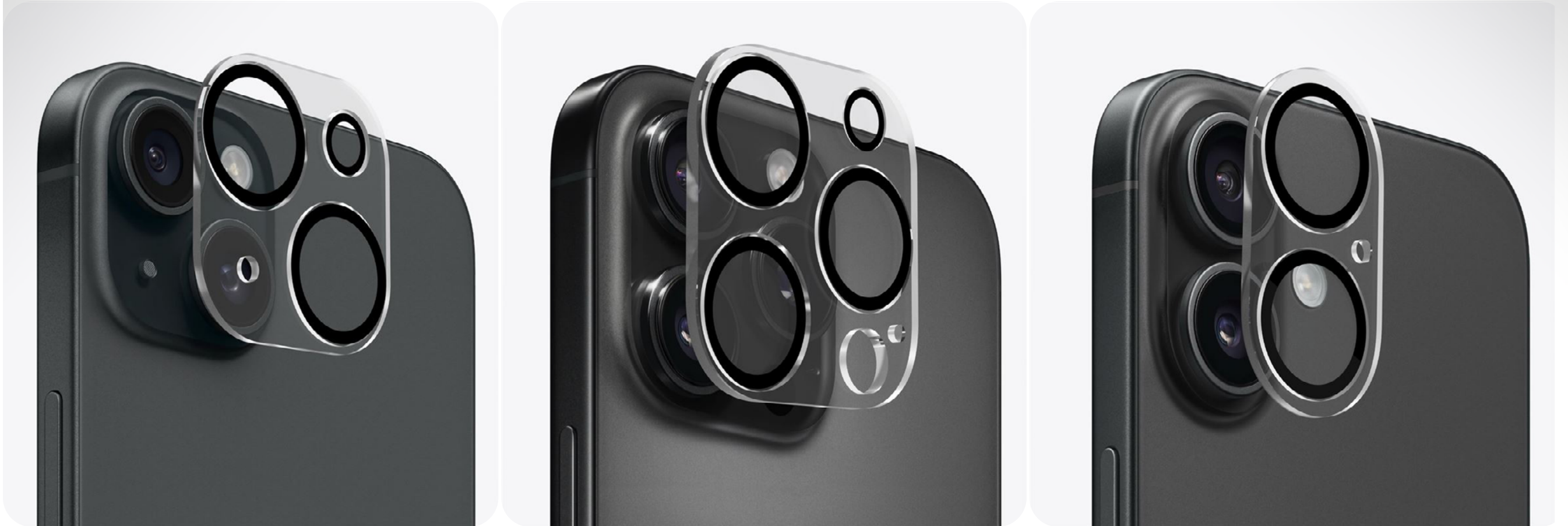
Nothing phone



Nintendo



## Mobile Origin Easy Lens full cover, clear



### Multi-layer protection



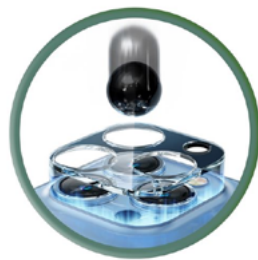
The glass features 5 layers for enhanced durability.

### Anti-reflective and 98.5% Transparent



The lens guard does not change the quality of the camera.

### Full Cover Protection



Scratch and drop resistant.

### Easy Installation



The installation kit ensures a quick, bubble-free application.

### Mobile Origin Easy Lens Full cover, clear

- Scratch, explosion and drop protection
- Ultra-thin tempered glass
- 0.3mm glass thickness
- 9H hardness
- Anti-reflex
- Full Cover
- Multi-layer protection
- Electrolytically plated coating
- 98.5% transparency(does not affect photo quality)
- Fingerprint and smudge resistance
- Easy installation and removal using the installation frame

### Key Features:

- Scratch and crack resistance
- Enjoy ultra-clear display with anti-fingerprint, reinforced layers, impact-resistant hydraulic protection, and special glass adhesive for a flawless fit. Maximum durability, zero smudges.
  - 1. Anti-fingerprint coating
  - 2. Secondary reinforcement layer
  - 3. Hardened hydraulic layer
  - 4. Highly transparent glass layer
  - 5. Special glass adhesive
- Enhanced Visual Clarity
- Electroplated Coating:
- Easy installation

- Package Contents:
- Easy Lens Full Cover
- Installation kit

### Mobile Origin Easy Lens full cover, clear - iPhone 14 / 14 Plus

PN **FRL-LGFC-i14-CLR**  
RRP **6,49 €**  
EAN **8594215993223**

### Mobile Origin Easy Lens full cover, clear - iPhone 14 Pro / 14 Pro Max

PN **FRL-LGFC-i14Pro-CLR**  
RRP **6,49 €**  
EAN **8594215993216**

### Mobile Origin Easy Lens full cover, clear - iPhone 13 Pro / 13 Pro Max

PN **FRL-LGFC-i13Pro-CLR**  
RRP **6,49 €**  
EAN **8594215993230**

### Mobile Origin Easy Lens full cover, clear - iPhone 15 / 15 Plus

PN **FRL-LGFC-i15-CLR**  
RRP **6,49 €**  
EAN **8594215993209**

### Mobile Origin Easy Lens full cover, clear - iPhone 15 Pro / 15 Pro Max

PN **FRL-LGFC-i15Pro-CLR**  
RRP **6,49 €**  
EAN **8594215993193**

### Mobile Origin Easy Lens full cover, clear - iPhone 16 / 16 Plus

PN **FRL-LGFC-i16-CLR**  
RRP **6,49 €**  
EAN **8594215993186**

### Mobile Origin Easy Lens full cover, clear - iPhone 16 Pro / 16 Pro Max

PN **FRL-LGFC-i16Pro-CLR**  
RRP **6,49 €**  
EAN **8594215993179**

## Mobile Origin Easy Lens full cover, black



### Mobile Origin Lens guards, black

- Protect your device's camera lens with the high-quality, easy-to-apply Mobile Origin Easy Lens Guard
- Protects against scratches and cracks from every angles
- Crystal-clear 99% transparency
- 2xAR High aluminum 0.33mm glass
- 9H hardness
- Antireflective double sided coating (reflectivity reduced to 0.2-0.4%)
- Multi protective layers
- 115° Oil coating
- Does not fog the camera lens
- Anti-fingerprint technology
- Easy installation and removal with installation frame
- Case friendly (0.2mm between the lens and the case)

### Key Specs:

- Case friendly design: Our lens protector ensures a seamless fit with your phone case, offering robust protection without compromising style or function. With a slim 0.2mm gap, your lens remains shielded while staying compatible with most cases.
- Scratch and crack resistance: Equipped with Protective Black Rings, these lens guards offer all-around protection, safeguarding your camera lens from scratches, cracks, and accidental damage from every angle.
- Shock Absorption: The multi-layered design and 9H hardness provide exceptional shock absorption, preventing impact damage.
  - 1. Metal Frame
  - 2. 0.33mm high aluminium glass
  - 3. Oleophobic Layer
  - 4. Deep processing hardened layer
  - 5. AR coating
  - 6. Tempered Glass Layer
  - 7. AR coating
  - 8. Black silk screen ring
  - 9. Sponge seal ring
- 115° oil coating: The 115° oil coating repels oil and water, keeping smudges and dirt off your lens and making it easy to clean. With anti-fingerprint technology, the lens guard remains free from greasy fingerprints, ensuring your shots are always clear and sharp.
- Easy installation: The easy-installation frame ensures a quick, bubble-free application, giving you a perfect fit with minimal effort. Designed to be case-friendly, the slim profile leaves a 0.2mm clearance between the lens guard and your case, offering full compatibility without adding bulk.

### Package contents:

- Easy Lends Guard
- Installation frame

### Mobile Origin Easy Lens guards, black - iPhone 13 Pro / 13 Pro Max

PN **FRL-LSG-i13Pro-BLK**  
RRP **6,76 €**  
EAN **8594215993308**

### Mobile Origin Easy Lens guards, black - iPhone 14 / 14 Plus

PN **FRL-LSG-i14-BLK**  
RRP **6,76 €**  
EAN **8594215993292**

### Mobile Origin Easy Lens guards, black - iPhone 14 Pro / 14 Pro Max

PN **FRL-LSG-i14Pro-BLK**  
RRP **6,76 €**  
EAN **8594215993285**

### Mobile Origin Easy Lens guards, black - iPhone 15 / 15 Plus

PN **FRL-LSG-i15-BLK**  
RRP **6,76 €**  
EAN **8594215993278**

### Mobile Origin Easy Lens guards, black - iPhone 15 Pro / 15 Pro Max

PN **FRL-LSG-i15Pro-BLK**  
RRP **6,76 €**  
EAN **8594215993261**

### Mobile Origin Easy Lens guards, black - iPhone 16 / 16 Plus

PN **FRL-LSG-i16-BLK**  
RRP **6,76 €**  
EAN **8594215993254**

### Mobile Origin Easy Lens guards, black - iPhone 16 Pro / 16 Pro Max

PN **FRL-LSG-i16Pro-BLK**  
RRP **6,76 €**  
EAN **8594215993247**

## Mobile Origin Easy Lens full cover, clear



### Mobile Origin Lens guards, black

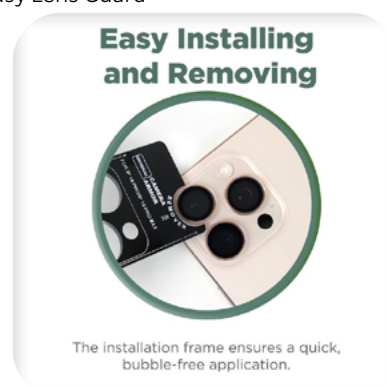
- Protect your device's camera lens with the high-quality, easy-to-apply Mobile Origin Easy Lens Guard
- Protects against scratches and cracks from every angles
- Crystal-clear 99% transparency
- 2xAR High aluminum 0.33mm glass
- 9H hardness
- Antireflective double sided coating (reflectivity reduced to 0.2-0.4%)
- Multi protective layers
- 115° Oil coating
- Does not fog the camera lens
- Anti-fingerprint technology
- Easy installation and removal with installation frame
- Case friendly (0.2mm between the lens and the case)

### Key Specs:

- Case friendly design: Our lens protector ensures a seamless fit with your phone case, offering robust protection without compromising style or function. With a slim 0.2mm gap, your lens remains shielded while staying compatible with most cases.
- Scratch and crack resistance: Equipped with Protective Black Rings, these lens guards offer all-around protection, safeguarding your camera lens from scratches, cracks, and accidental damage from every angle.
- Shock Absorption: The multi-layered design and 9H hardness provide exceptional shock absorption, preventing impact damage.
  - 1. Metal Frame
  - 2. 0.33mm high aluminium glass
  - 3. Oleophobic Layer
  - 4. Deep processing hardened layer
  - 5. AR coating
  - 6. Tempered Glass Layer
  - 7. AR coating
  - 8. Black silk screen ring
  - 9. Sponge seal ring
- 115° oil coating: The 115° oil coating repels oil and water, keeping smudges and dirt off your lens and making it easy to clean. With anti-fingerprint technology, the lens guard remains free from greasy fingerprints, ensuring your shots are always clear and sharp.
- Easy installation: The easy-installation frame ensures a quick, bubble-free application, giving you a perfect fit with minimal effort. Designed to be case-friendly, the slim profile leaves a 0.2mm clearance between the lens guard and your case, offering full compatibility without adding bulk.

### Package contents:

- Easy Lends Guard
- Installation frame



### Mobile Origin Easy Lens guards, clear - iPhone 13 Pro/13Pro Max

PN **FRL-LSG-i13Pro-CLR**  
RRP **6,76 €**  
EAN **8594215993391**

### Mobile Origin Easy Lens guards, clear - iPhone 14/14 Plus

PN **FRL-LSG-i14-CLR**  
RRP **6,76 €**  
EAN **8594215993384**

### Mobile Origin Easy Lens guards, clear - iPhone 16/16 Plus

PN **FRL-LSG-i16-CLR**  
RRP **6,76 €**  
EAN **8594215993346**

### Mobile Origin Easy Lens guards, clear - iPhone 14 Pro/14 Pro Max

PN **FRL-LSG-i14Pro-CLR**  
RRP **6,76 €**  
EAN **8594215993377**

### Mobile Origin Easy Lens guards, clear - iPhone 15 Pro/15 Pro Max

PN **FRL-LSG-i15Pro-CLR**  
RRP **6,76 €**  
EAN **8594215993353**

### Mobile Origin Easy Lens guards, clear - iPhone 15/15 Plus

PN **FRL-LSG-i15-CLR**  
RRP **6,76 €**  
EAN **8594215993360**

### Mobile Origin Easy Lens guards, clear - iPhone 16 Pro/16 Pro Max

PN **FRL-LSG-i16Pro-CLR**  
RRP **6,76 €**  
EAN **8594215993339**

## Nanoleaf Blocks Big Squares Starter Kit 6 Pack

PN **N8100K02-6BS**  
RRP **199,99 €**  
EAN **4895263600601**



### Package includes:

- 1 x Controller
- 6 x Squares
- 1 x PSU Linker/Tapes
- 1 x Quick Start Guide

## Nanoleaf Blocks Combo Starter Kit 10 Pack

PN **N8100K02-10CB**  
RRP **249,99 €**  
EAN **4895263600700**



### Package includes:

- 1 x Controller
- 4 x Squares
- 4 x Small Squares
- 1 x Pegboard
- 2 x Pegboard Hooks
- 1 x Shelf
- 1x Shelf cover
- 1 x PSU Tapes, Linker and Screws
- 1 x Quick Start Guide

### Nanoleaf Blocks Big Squares Starter Kit

- Build your lighting display YOUR way with Nanoleaf Blocks! This kit features extra-large square panels with edge to edge illumination, giving you the power to paint your world with vibrant colors and dynamic animated lighting effects. Mix and match Blocks Squares with additional add-ons to give your layout extra dimension and functionality for next-level statement lighting
- Extra-Large Panel Size
- App, Voice, Manual Control
- Simple Adhesive Mounting

### Key features & Benefits

- Build Your Lighting Display, Your Way With modular light panels, pegboards, and shelves that can be mixed and matched, you have total design freedom to create a statement lighting piece that doubles as a versatile display and storage solution.
- The Ultimate Showstopper Mix and match from 5 Blocks styles for a lighting layout that's totally unique to you. Take customization one step further by creating your own color palettes and animated Scenes
- Design Your Own Pixel-Art Inspired Displays Sleek square panels with even edge-to-edge lighting give you complete creative flexibility to go ultra minimalistic or take it to the max
- Display & Storage Functionality Maximize desk space and stay clear of clutter with space-saving Shelves and Light Pegboards—all while still letting your items shine! Organize and display your favorite gadgets, keyboards, controllers and more
- Easy Smart Control Control via Wi-Fi using Nanoleaf Mobile & Desktop App, Smart Home Ecosystems & Voice Control, or Physical Controller
- AI Magic Scenes Automatically generate color palettes based on a word or phrase using AI
- Customize Colors & Motions Create your own palettes and animated color-changing Scenes with 16M+ colors, or browse thousands of community creations. Use our Paint Tool within the Scene Creator to choose exactly where each color goes on your layout!
- Reacts to Music Watch your lights dance to music with built-in sound reactivity—or enable Orchestrator in the Desktop App for enhanced synchronization across your lights.
- Screen Mirror Sync your lights in real-time with the colors from your favorite movies and video games. Available through the Nanoleaf Desktop App or through Sync+ with Nanoleaf 4D.

### Tech Specs

- Usage: Indoor
- Lifetime: 25 000 hours
- Dimensions: Squares 231 x 231 x 29 mm, Small Squares 115,5 x 115,5 x 29 mm, Light Pegboard 231 x 231 x 29 mm, Pegboard Hook 79,5 x 76,6 x 5,5 mm, Shelves 229,6 x 70 x 129 mm, Shelf Cover 75,5 x 79,7 x 76,6 mm, Cable Length 2m, Controller 230 x 35 x 29 mm
- Weight: Squares (Per Panel) 550g Small Squares (Per Panel) 135g Light Pegboard (Per Panel) 900g Pegboard Hook 26g Shelf 227,5g Shelf Cover 26g PSU 205g Controller 40g
- Shelf Load Bearing Capacity 1,5kg
- Light Pegboard Load Bearing Capacity 3kg
- General Luminous Per Display: Squares 120 lumens Small Squares 42 lumens, Light Pegboard 120 lumens
- Communication Protocol: WiFi (2.4 GHz b/g/n)

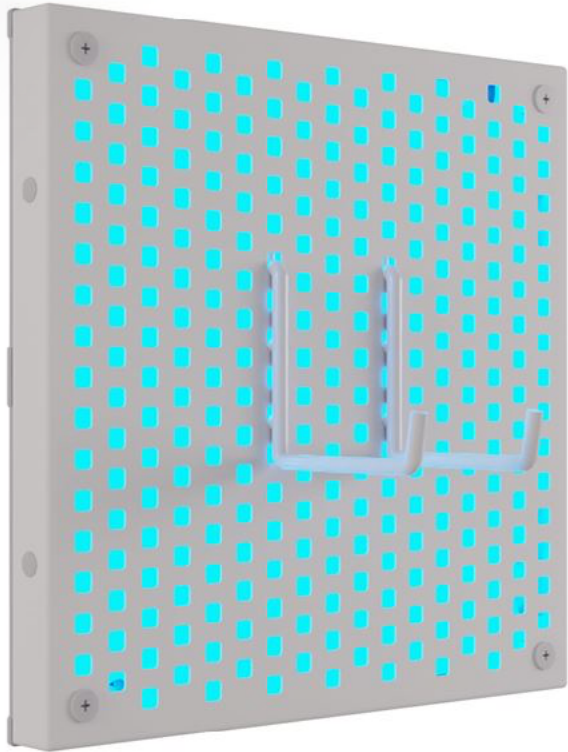
### NOTE: 5 GHz networks are not compatible with Nanoleaf products.

- Dimmability: Yes (via Nanoleaf App, Voice, Controller)
- Mounting Type: Squares: Double-sided mounting tape (included), Small Squares: Double-sided mounting tape (included), Light Pegboard: Must be screw mounted (screws provided), Shelves: Must be screw mounted (screws provided)
- The Nanoleaf App Control via Nanoleaf App (Android & iOS) for mobile/tablet or The Nanoleaf Desktop App (Windows & Mac)
- Thread Compatibility: Can act as a Thread Border Router with a future firmware update
- Compatibility: Apple Home, Amazon Alexa, Google Home, SmartThings, Razer Chroma
- Colour Temperature: 1200K-6500K
- Colour Channel Configuration: RGBW
- Max Colours: More than 16 million
- Colour Rendering Index (CRI): 80
- Power Voltage: 100 - 240V AC Max
- Panels per Power Supply (42W): Squares: 17 Light Pegboard: 17 Small Squares: 60
- Max Panels per Controller: 500
- Individual Power Consumption Values: Bigger layouts may require additional Power Supply Units. Use the following values to calculate the maximum number of panels per PSU: Squares: 3W Light Pegboard: 3W Textured Squares: 3W Small Squares: 0.8W
- Operating temperature range: 0? to 40? IP Rating IP20



## Nanoleaf Blocks Pegboard Expansion Pack 1 Pack

PN **N8100E00-1BP**  
RRP **39,99 €**  
EAN **4895263600564**



## Nanoleaf Blocks Small Squares Expansion Pack 4 Pack

PN **N8100E00-4SS**  
RRP **49,99 €**  
EAN **4895263600557**



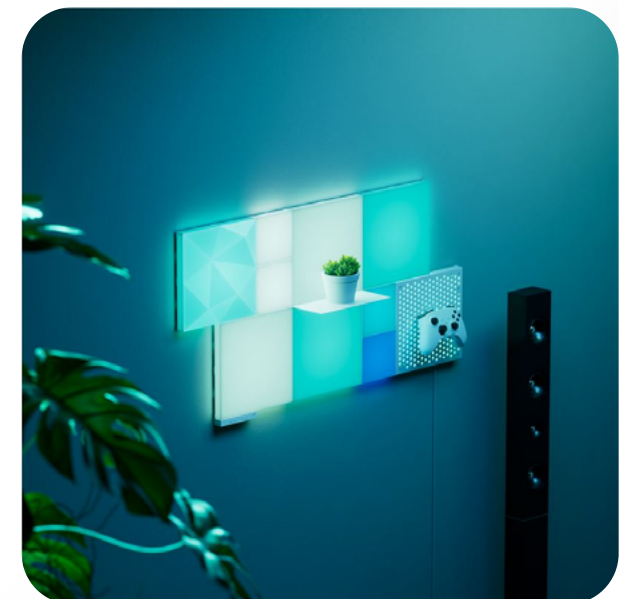
## Nanoleaf Blocks Squares Expansion Pack 2 Pack

PN **N8100E00-2BS**  
RRP **59,99 €**  
EAN **4895263600540**



## Nanoleaf Blocks Textured Big Squares Expansion Pack 2 Pack

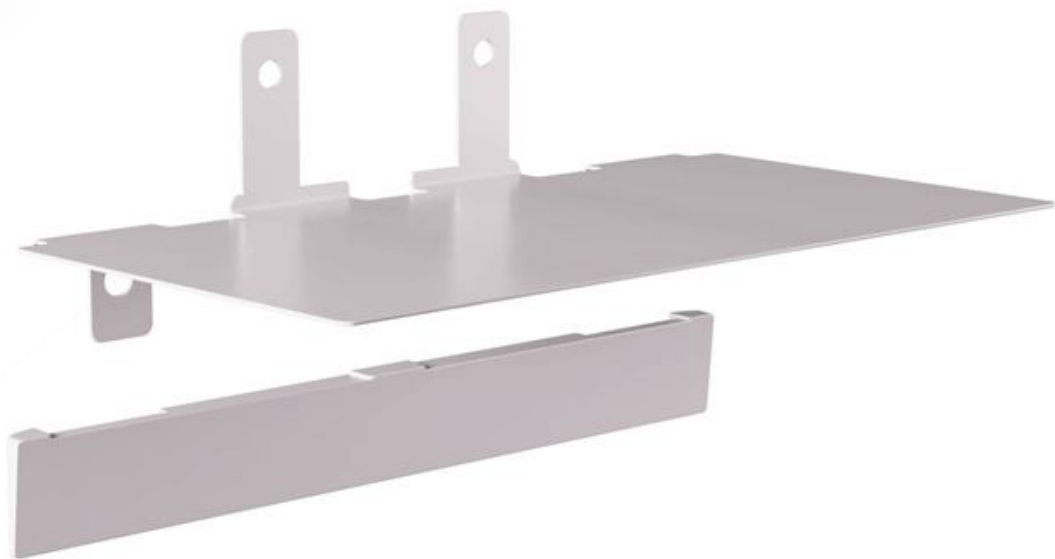
PN **N8100E00-2TBS**  
RRP **59,99 €**  
EAN **4895263600588**





## Nanoleaf Blocks Shelf Expansion Pack 2 Pack

PN **N8100E00-2BSH**  
RRP **29,99 €**  
EAN **4895263600571**



## Nanoleaf Sense+ Smart Wireless Light Switch

PN **N4400C02-1BUT**  
RRP **29,99 €**  
EAN **4895263601059**



### Nanoleaf Sense+ Smart Wireless Light Switch

- Control your lights your way with Nanoleaf's innovative Sense+ Smart Wireless "Anywhere" Switch. Our exclusive Litewave technology allows you to control your Nanoleaf lights instantaneously without any hardwiring needed!
- Put these smart wireless switches EVERYWHERE you want—like by your bedside or desk, in the kitchen, living room, hallway or bathroom for an extra point of control for your smart lights in addition to the Nanoleaf app, or your smart home ecosystem.
- - Built-In Motion & Daylight Sensors
- - Buttons to Turn Lights On/Off & Adjust Brightness
- - 2 Programmable Side Buttons for Up to 6 Custom Actions - Battery Powered (CR2477)
- - For Nanoleaf Smart Lights Only
- - Matter Early Access available via Apple Home & SmartThings

### Tech Specs

- Usage: Indoor
- Controller: 6 cm x 11 cm
- Power: Battery
- Powered Lifetime: 1+ Years CR2477 Battery Included
- Mounting Method: Included Adhesive or Screws (not included)
- Control: Physical Controls On/Off, Adjust Brightness, 2 Configurable Buttons
- Communication Protocol: Bluetooth, Thread, Matter over Thread NOTE: 5 GHz networks are not compatible with Nanoleaf products.
- Dimmability: Yes, via the Nanoleaf App & Voice
- Control Dimming: Yes, 1%-100% with App Compatibility Matter, Apple Home, Amazon Alexa, Google Home, Samsung SmartThings, Razer Chroma
- PIR Sensing Distance: max 10 meters
- PIR Sensing Angle Range: Vertical 90-degree Horizontal 120-degree
- The Nanoleaf App Control via Nanoleaf App (Android & iOS) on mobile/tablet or with the Nanoleaf Desktop App via Wi-Fi

### Package includes:

- 1x Smart Wireless Switch
- 1x Quick Start Guide
- 1x Magnetic Mounting Plate

